

Your VOLUNTEER PARK CONSERVATORY ANNUAL PASS HAS ARRIVED!!!



Thank you for purchasing a Volunteer Park Conservatory Annual Pass. Starting October 1, 2013, you can begin using your Pass for year-round access to the Conservatory.

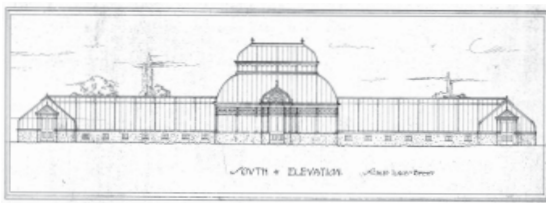
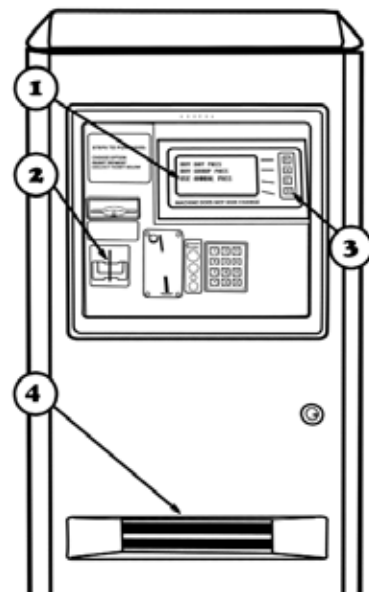
Proceeds from the annual pass program are vital to keeping the Conservatory's doors open and support its long-term sustainability.

We hope you visit Volunteer Park Conservatory frequently. There's always something new to see in every house, including frequent changes to the seasonal house display; the Conservatory is a beautiful and exciting place to explore year-round.

HOW TO USE YOUR ANNUAL PASS:

1. Select "Use Annual Pass" from the menu options
2. Insert your Annual Pass with magnetic stripe facing up and to the right.
3. Select number of adult, youth and child day passes to dispense (if applicable).
4. Receive pass(es) from lower slot
5. Place Day Pass visibly on your clothing

If you have any questions about the Annual Pass program or pass card usage, please call 206.322.4112 or e-mail fovc@volunteerparkconservatory.org.



EXPIRATION DATE:
9/30/2014

TERMS AND CONDITIONS:

Annual Passes are non-transferable, and can only be used by an individual, or a family for the pass-holder's personal benefit. Volunteer Park Conservatory may request photo identification with regard to the Annual Pass transactions. Unique Pass numbers are linked to customer data, and will not change upon pass renewal. If your card is lost or stolen, please report the loss at the Palm House Gift Shop. After verifying personal identification, Annual Pass card can be replaced with a service charge. Annual Passes do not entitle entry to Friends of the Conservatory (FOC) member events unless bundled as part of Membership dues. This Annual Pass is not a credit card, debit card, or a saving account card. Family annual passes, unless otherwise specified, will exercise membership rights, by the named person listed in the account. Volunteer Park Conservatory Annual Pass cards are issued by and remain property of Seattle Park and Recreation. FOC collects and manages your personal information in accordance with the principles of privacy law. The information provided by you will only be used for FOC purposes, such as administration of your membership, provision of FOC goods and services, and planning, research, and marketing of membership programs. FOC will not disclose, sell, distribute, share, or otherwise present your personal information to any third party.



Volunteer Park Conservatory
1400 East Galer Street
Seattle, WA 98122
volunteerparkconservatory.org
Phone: 206.322.4112

